

HONDA 2016-22 Pioneer Tailgate Extender

Thank you for choosing Rough Country for all your vehicle needs.

Please read instructions before beginning installation. Check the kit hardware against the kit contents shown below. Be sure you have all needed parts and know where they go.

If question exist, please call us @1-800-222-7023. We will be happy to answer any questions concerning this product.

Check all fasteners for proper torque. Check to ensure for adequate clearance between all components.

Periodically check all hardware for tightness.

KIT CONTENTS:

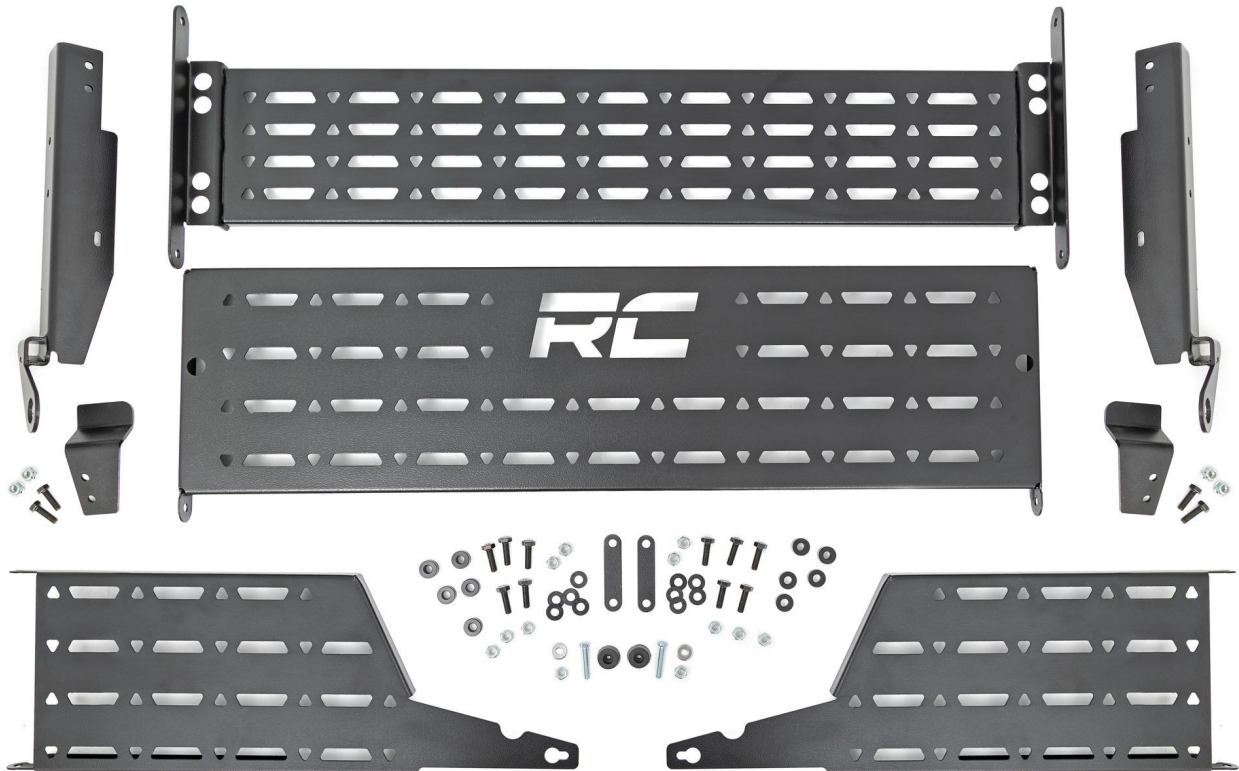
- Dr Tailgate Extender Bracket x1
- Pass Tailgate Extender Bracket x1
- Dr Clamp x1
- Pass Clamp x1
- Bottom Panel x1
- Rear Panel x1
- Dr Side Panel x1
- Pass Side Panel x1
- Cable Plate x2

TOOLS NEEDED:

- Screwdriver
- 5mm Allen Wrench
- 10mm Socket/Wrench
- 13mm Socket/Wrench

HARDWARE INCLUDED:

- 8mm x 25mm Button Head Bolts x14
- 8mm Flange Lock Nuts x4
- 8mm Lock Nuts x10
- 8mm Nylon Washers x12
- 6mm x 35mm Hex Head Bolts x2
- 6mm x 20mm Button Head Bolts x2
- 6mm Flat Washer x4
- 6mm Nylock Nuts x2
- 3/8" Spacers x6
- 1/2" Spacers x4



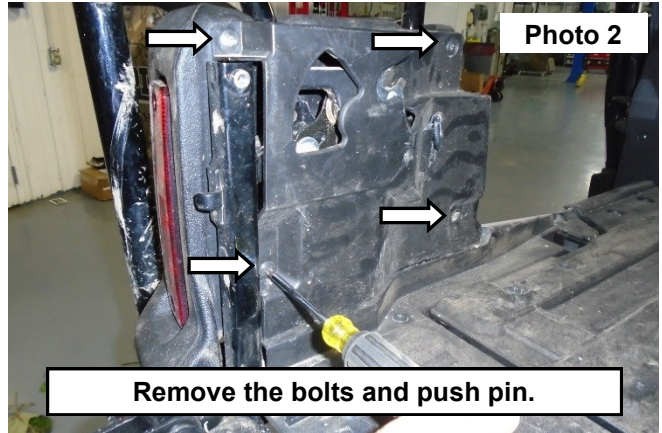
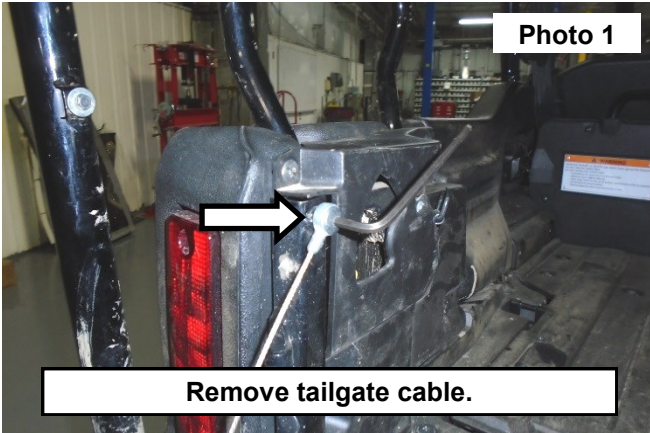
Torque Specs:

Size	Grade 5	Grade 8	Size	Class 8.8	Class 10.9
5/16"	15 ft/lbs	20ft/lbs	6MM	5ft/lbs	9ft/lbs
3/8"	30 ft/lbs	35ft/lbs	8MM	18ft/lbs	23ft/lbs
7/16"	45 ft/lbs	60ft/lbs	10MM	32ft/lbs	45ft/lbs
1/2"	65 ft/lbs	90ft/lbs	12MM	55ft/lbs	75ft/lbs
9/16"	95 ft/lbs	130ft/lbs	14MM	85ft/lbs	120ft/lbs
5/8"	135ft/lbs	175ft/lbs	16MM	130ft/lbs	165ft/lbs
3/4"	185ft/lbs	280ft/lbs	18MM	170ft/lbs	240ft/lbs

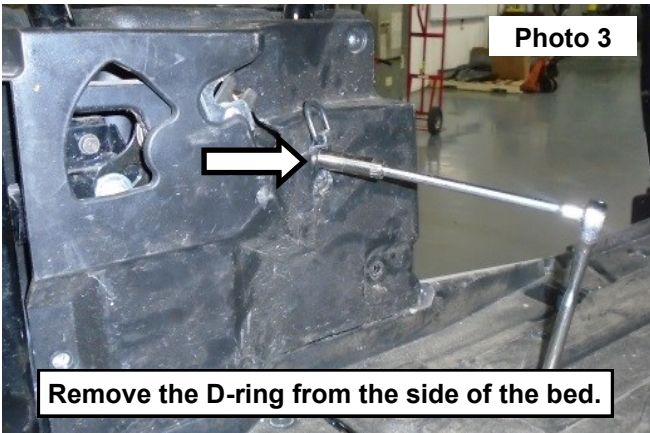


INSTALLATION INSTRUCTIONS

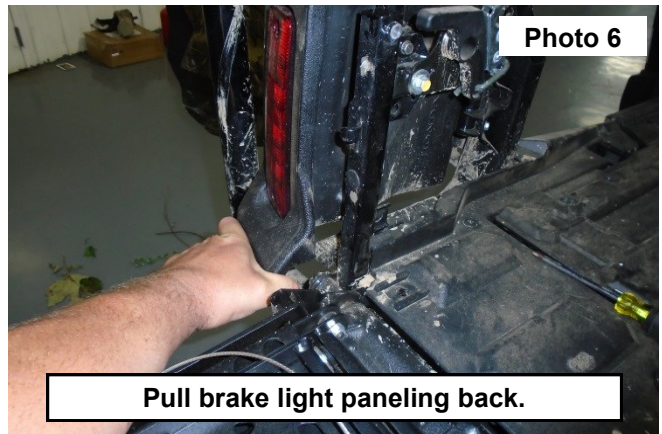
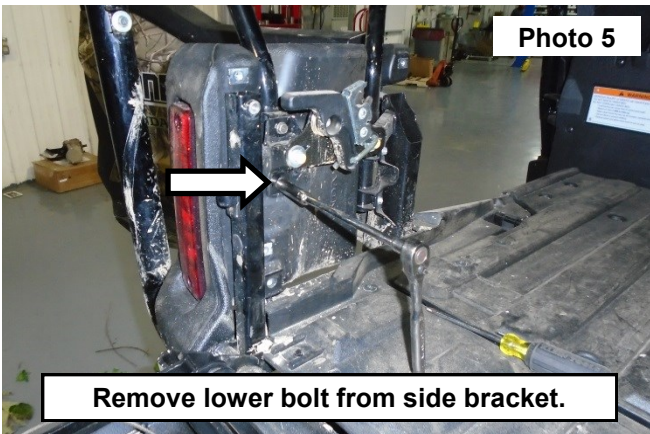
1. Remove the tailgate cable using a 5mm Allen wrench. **See Photo 1.**
2. Remove the 3 Phillip's head bolts in the side of the bed using a screw driver and remove the push pin using a trim remover tool. **See Photo 2.**



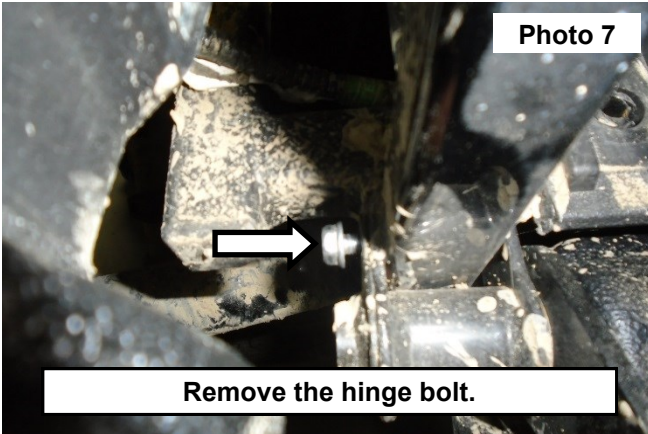
3. Remove the D-ring from the side of the bed using a 10mm socket/wrench. **See Photo 3.**
4. Remove the plastic panel from the side of the bed. **See Photo 4.**



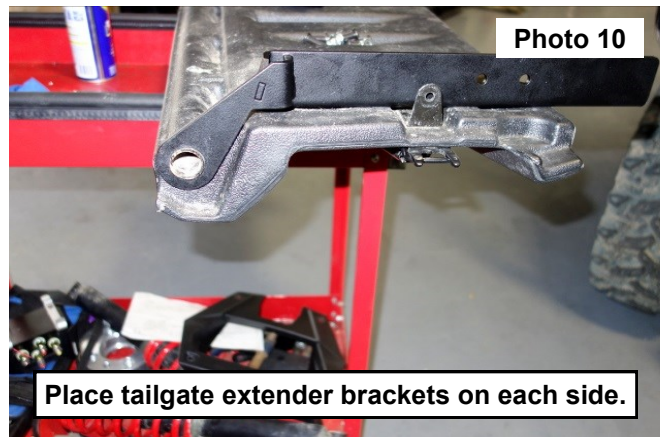
5. Remove the lower bolt from the side bracket using a 10mm socket/wrench. **See Photo 5.**
6. Pull the brake light paneling back to get access to the tail gate hinge. **See Photo 6.**



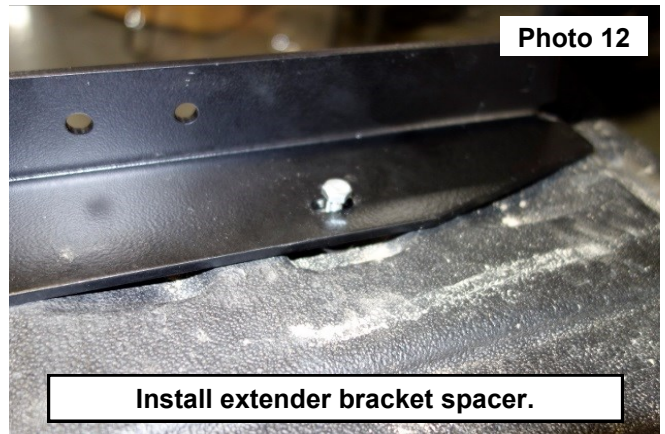
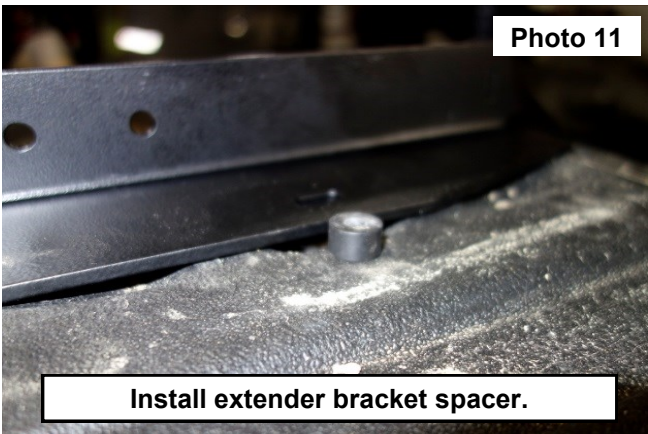
7. Remove the hinge bolt using a 10mm socket/wrench. **See Photo 7.**
8. Pull the pin out to release the tailgate. **See Photo 8.**



9. Pull the tailgate away from the bed and in the opposite direction from the other hinge. **See Photo 9.**
10. Place the tailgate extender bracket on the Pass/Dr sides of the tailgate. **See Photo 10.**



11. Install the supplied extender bracket 3/8" spacer between the bracket and the tailgate with the supplied 6mm x 35mm hex bolt and washer using a 10mm socket/wrench. **See Photo 11 and Photo 12.**



12. Install the clamps to the extender bracket on the Pass/Dr sides with the supplied 8mm x 25mm button head bolts and lock nuts using a 5mm Allen wrench and 13mm socket/wrench. **See Photo 13.**
13. Install the bottom panel to the extender brackets in the rear most hole with the supplied 8mm x 25mm bolts, 3/8" spacers, and lock nuts. **See Photo 14.**

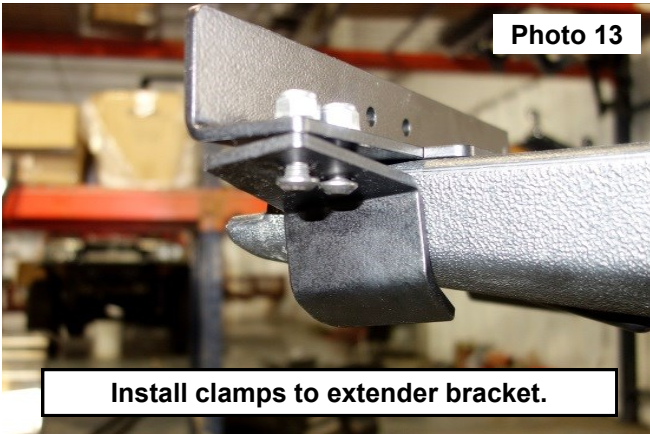


Photo 13

Install clamps to extender bracket.

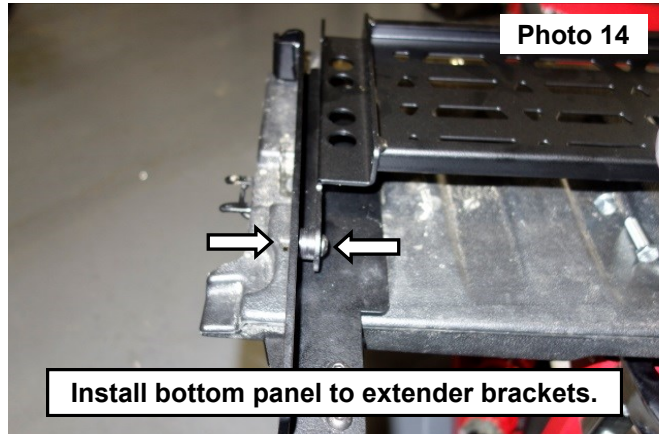


Photo 14

Install bottom panel to extender brackets.

14. Install the tailgate back on the vehicle by sliding one side on first and then pulling the pin back to get the other side on. **See Photo 15 and Photo 16.**
15. Press the pin back into place and reinstall the hinge bolt.



Photo 15

Install tailgate back on vehicle.

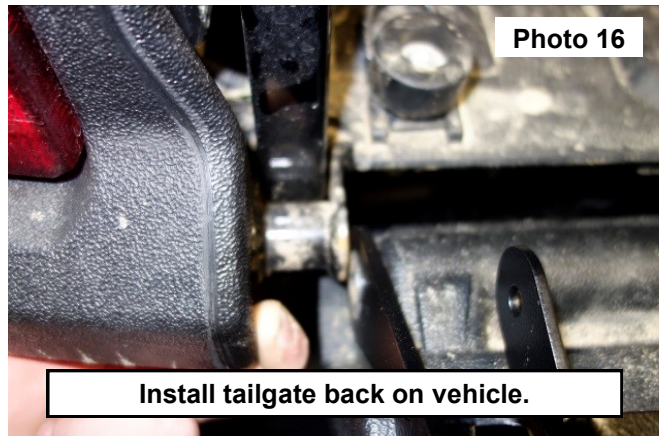


Photo 16

Install tailgate back on vehicle.

16. Install the rear panel to the bottom panel with the supplied 8mm x 25mm bolts, 3/8" spacers, and lock nuts using a 5mm Allen wrench and 13mm socket/wrench. **See Photo 17 and Photo 18.**

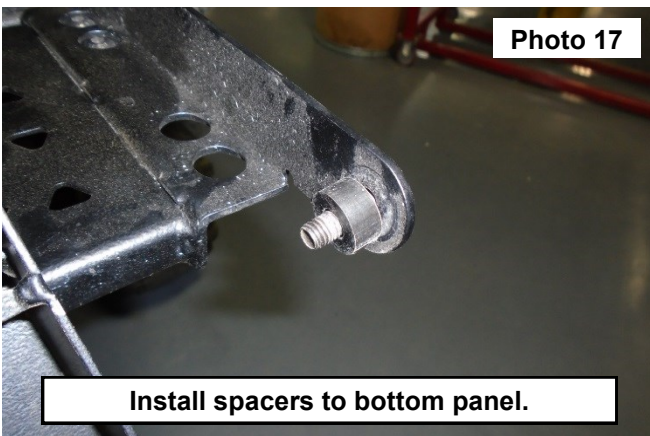


Photo 17

Install spacers to bottom panel.

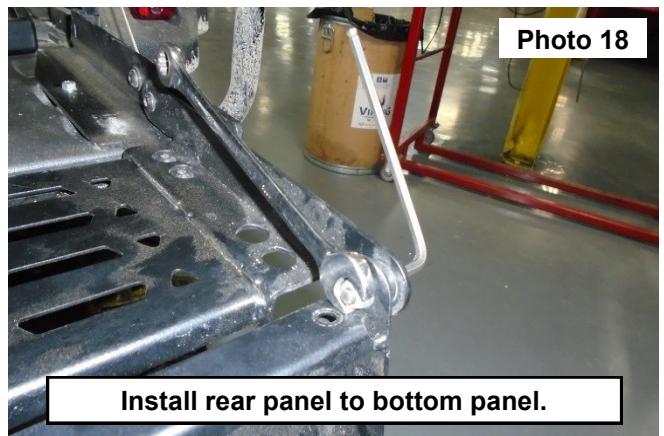
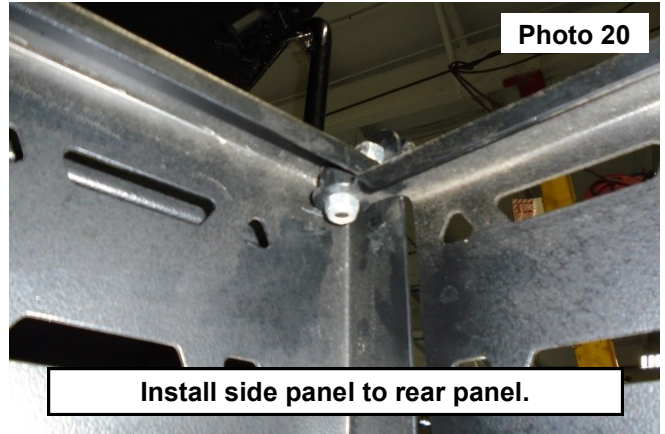
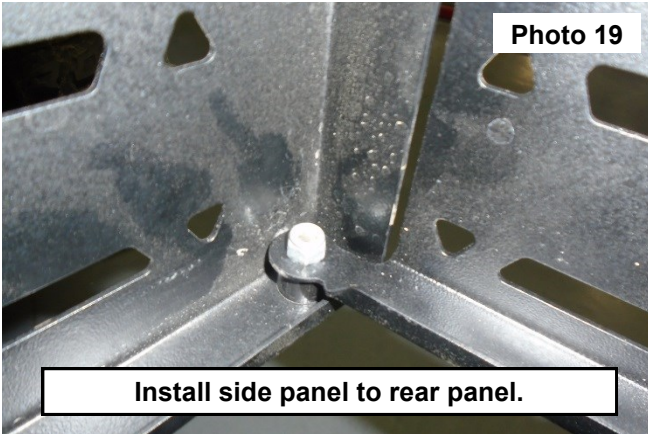


Photo 18

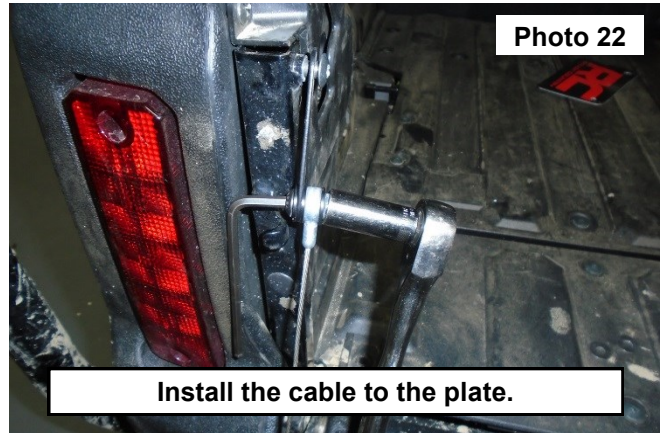
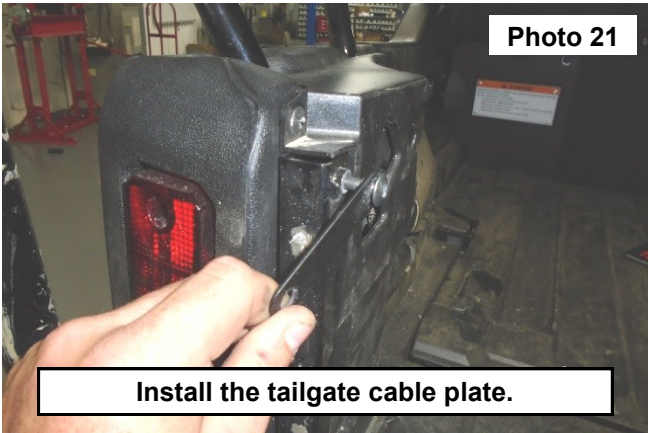
Install rear panel to bottom panel.

17. Let the rear panel hang down and install the side panels to the rear panel with the supplied 8mm x 25mm button head bolts, 1/2" spacers, and lock nuts. **See Photo 19** and **Photo 20**.

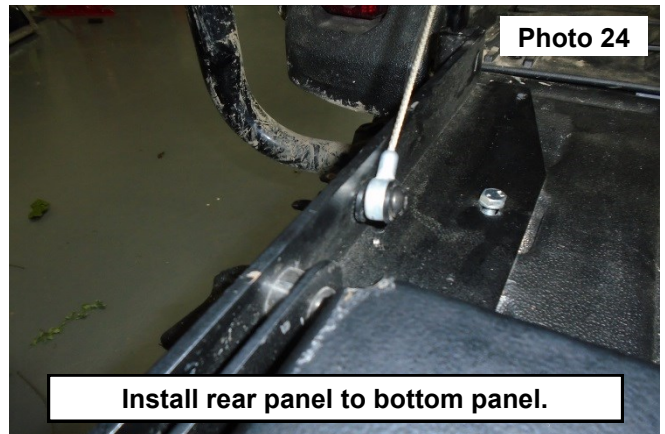
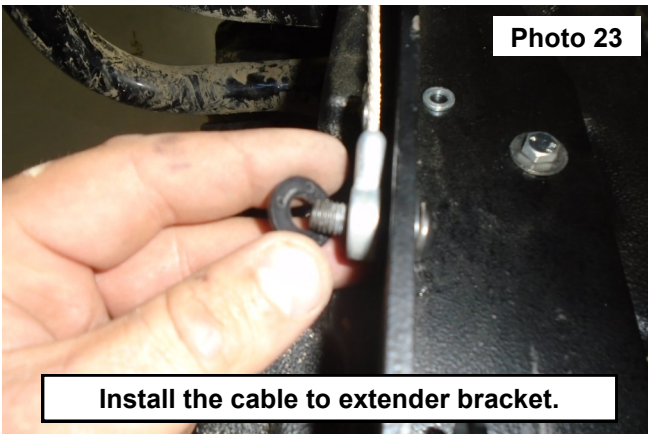


18. Install the tailgate cable plate using the stock hardware. **See Photo 21**.

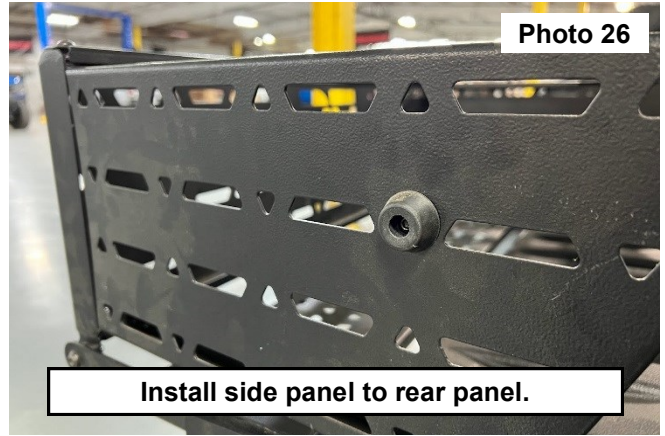
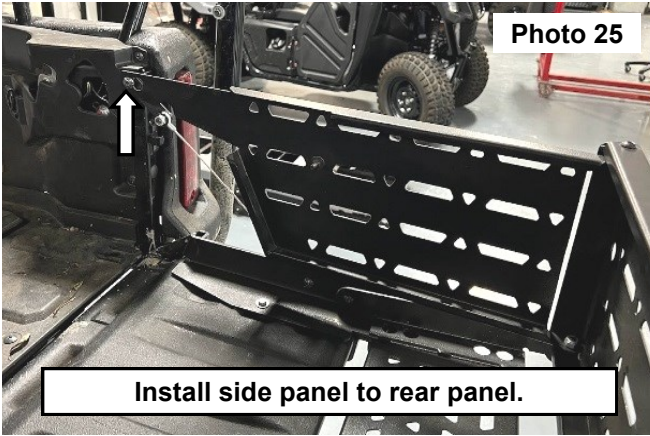
19. Install the cables to the plates using the supplied 8mm x 25mm bolts, nuts, and nylon washers. **See Photo 22**.
NOTE: Install a nylon washer between the nut and plate, plate and cable, and cable and bolt.



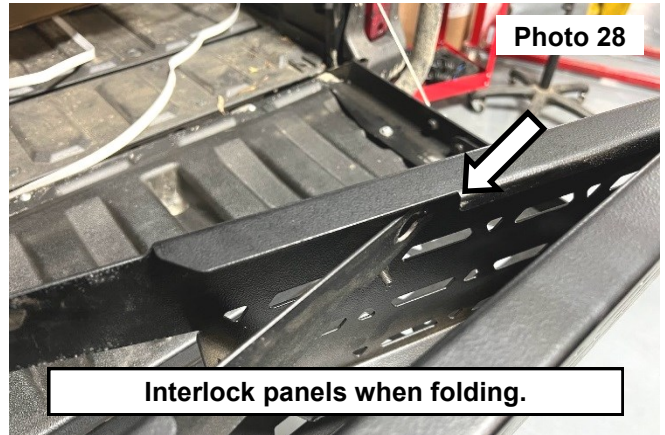
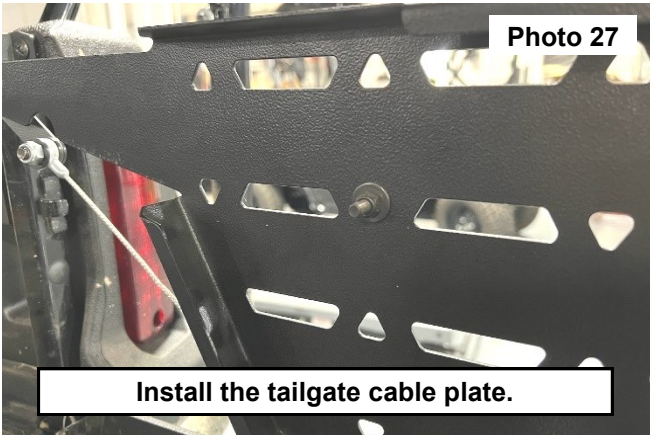
20. Install the other end of the cable to the tailgate extender bracket using the supplied 8mm x 25mm bolts, nuts, and nylon washers. **See Photo 23** and **Photo 24**.



21. Fold the rear panel with the side panels up, and hook side panels to the bolt securing the cable plate. **See Photo 25.**
22. Install the supplied bump stops to the outside of the side panels using the supplied 6mm x 20mm bolts, nuts, and washers. **See Photo 26 and Photo 27.**



23. **NOTE:** When folding the rear panels, be sure to fold them both at the same time so the sides interlock. The panels will not sit flush otherwise. **See Photo 28.**



By purchasing any item sold by Rough Country, LLC, the buyer expressly warrants that he/she is in compliance with all applicable, State, and Local laws and regulations regarding the purchase, ownership, and use of the item. It shall be the buyers responsibility to comply with all Federal, State and Local laws governing the sales of any items listed, illustrated or sold. The buyer expressly agrees to indemnify and hold harmless Rough Country, LLC for all claims resulting directly or indirectly from the purchase, ownership, or use of the items.

